

james loom

GENERAL NOTES:

- generally speaking, we'll use 27 bar loops
- some "pedal" mark or sound or transition vibe, which signals a transition between **patterns**

patterns could be....:

- 7 bar, 8 bar, 5 bar, 6 bar chunks of music in that order
 - this repeats 3x
- then switch to 3 bar, 4 bar, 1 bar, 2 bar chunks,
 - this repeats 3x

warps could be....:

- sound fx, string pads, also straight midi

a full songs worth of pattern:

- **SECTION 1** 7 bars, 8 bars, 5 bars, 6 bars (x3)
- **SECTION 2** 3 bars, 4 bars, 1 bar, 2 bar (x3)
- **SECTION 3** 5 bar, 6 bar, 7 bar, 8 bar (x3)
- **SECTION 4** 1 bar, 2 bar, 3 bar, 4 bar (x3)

COMPOSITION NOTES:

OK SO:

There's 4 sections, each section has a 'section lead pattern' that all of the elements follow and evolve with:

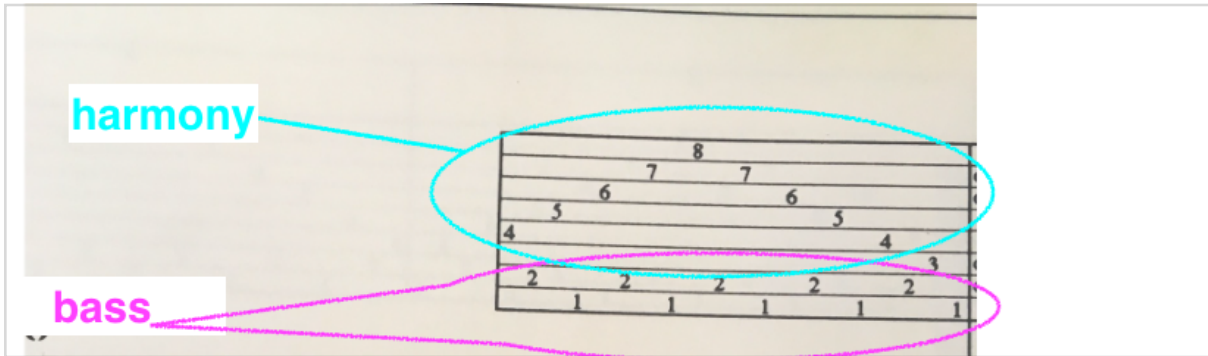
- **SECTION 1** 7 bars, 8 bars, 5 bars, 6 bars (x3)
- **SECTION 2** 3 bars, 4 bars, 1 bar, 2 bar (x3)
- **SECTION 3** 5 bar, 6 bar, 7 bar, 8 bar (x3)
- **SECTION 4** 1 bar, 2 bar, 3 bar, 4 bar (x3)

The various instruments and patterns that come in and out ALL follow parts of the work:

section 1

Start with a kick drum in space, following the structure of a house track. With some surface noise floating on the top. Disappears all of a sudden, and then enters:

Chord plucks and bass:



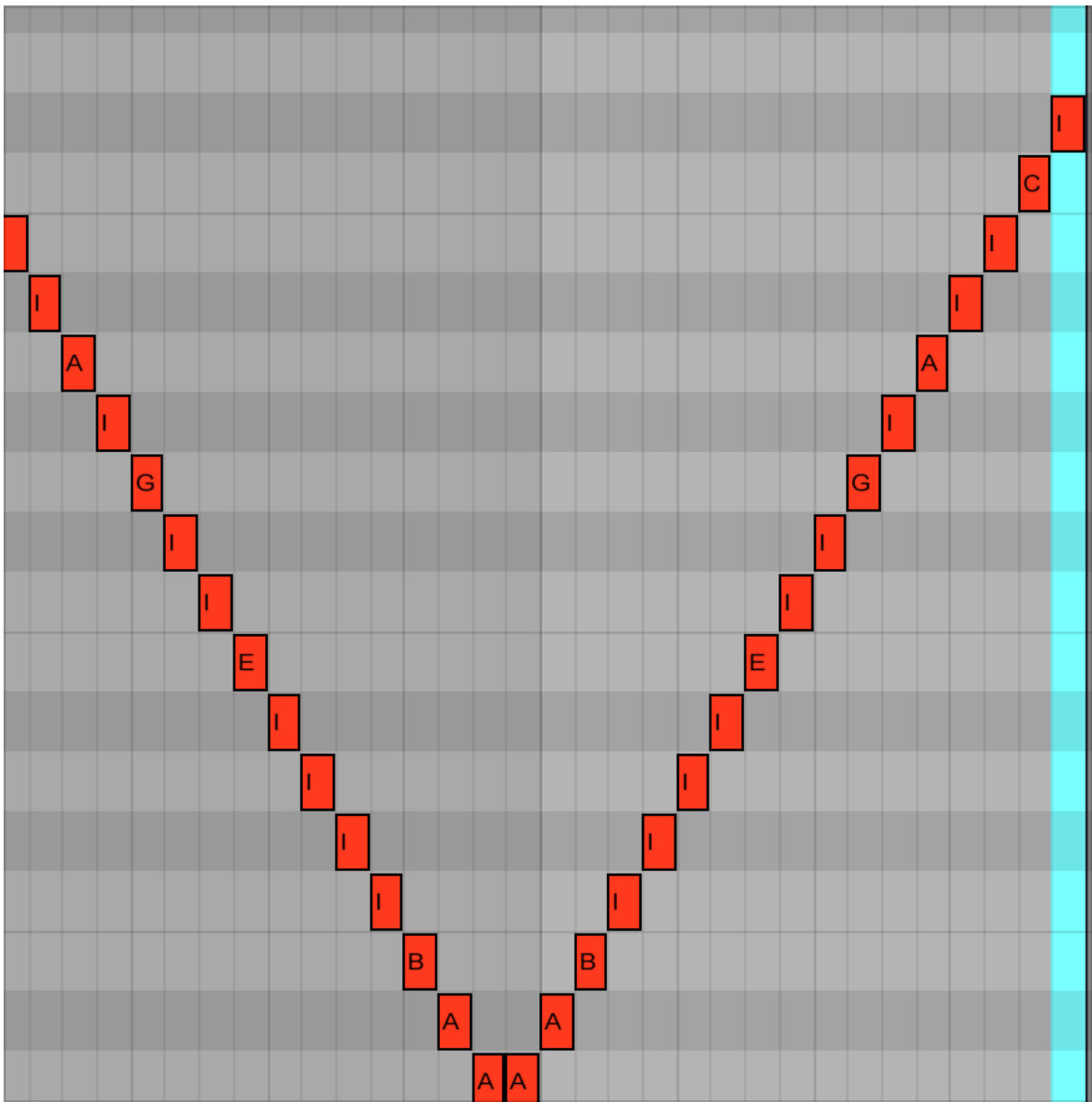
In the key of C, we're doing IV, V, VI, VII, I, VII, VI, V, IV, III, all major chords following the harmony, then after 27 bars, switch to MINOR all at once, so we're doing iv, v, vi, vii, i, vii, vi, v, iv, iii, looping

Bass stays regardless with the 2 / 1 pattern

section 2

Sampled the loom sounds, and it's following these patterns:

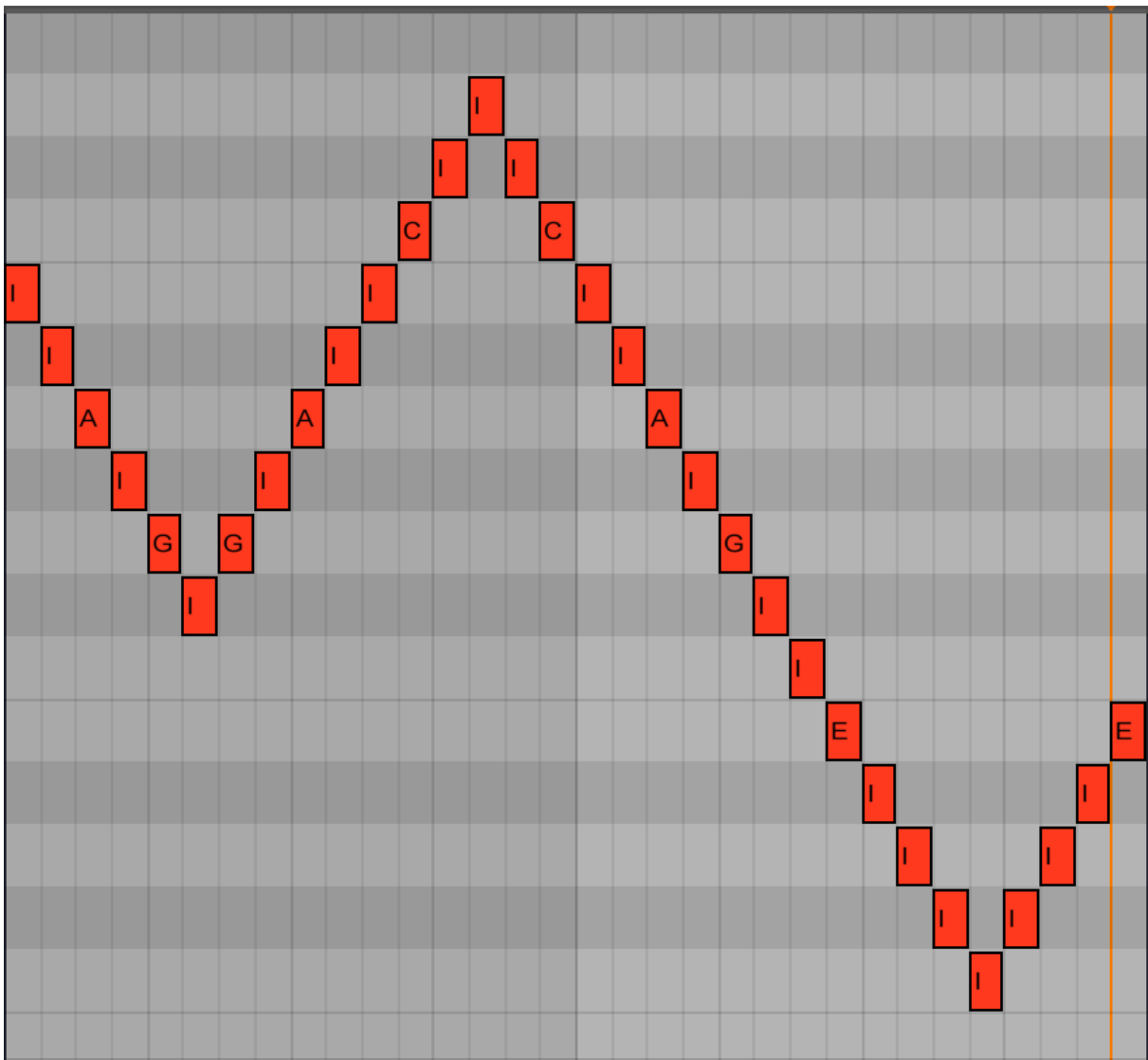
3 bars of:



Which is a simple interpretation of this pattern:



4 bars of:



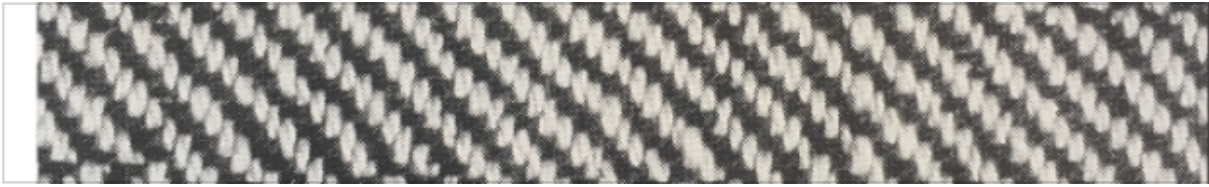
which is a simple interpretation of this pattern:



1 bar of:

I I
I I
A A
I I
G G
I I
I I
E I
I

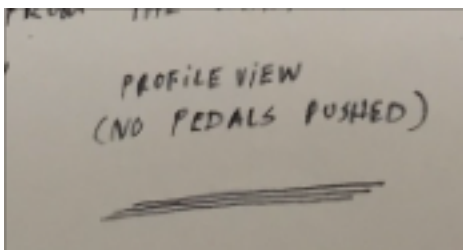
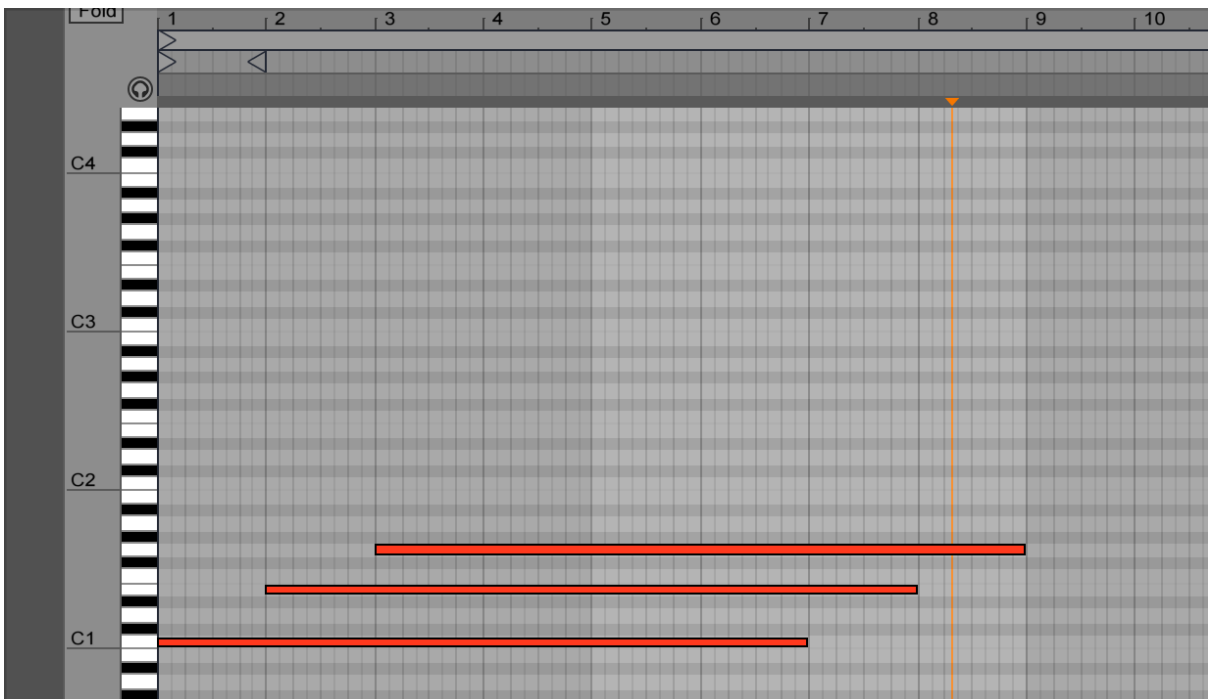
Which is a simple interpretation of this pattern:



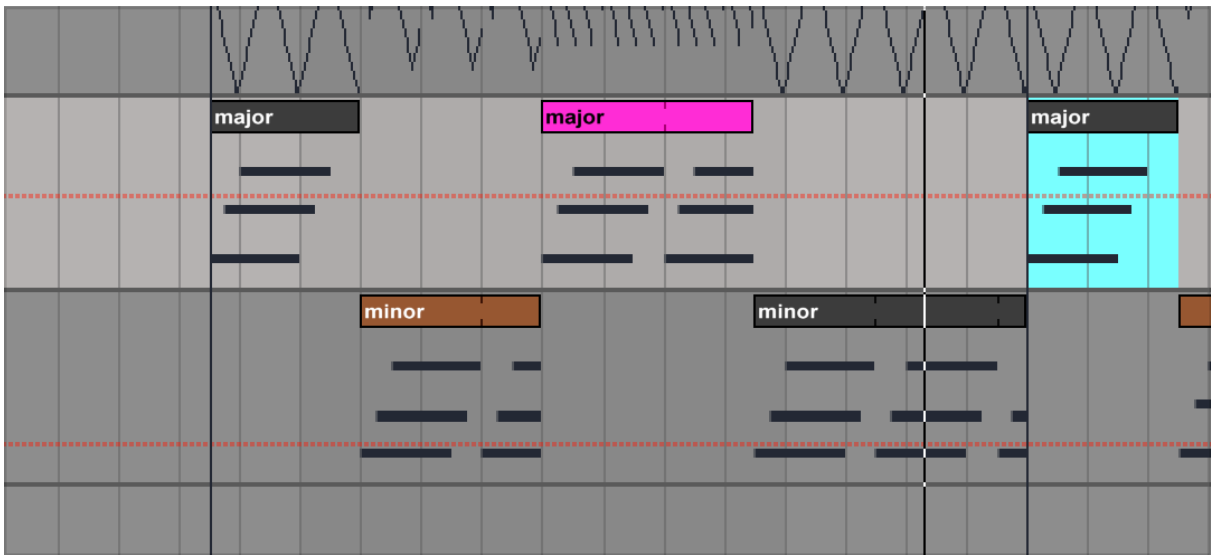
then, 2 bars of the "V" shape pattern, since I chose to only have three different patterns to switch between in each section. This gives it this rolling evolving thing.

section 3:

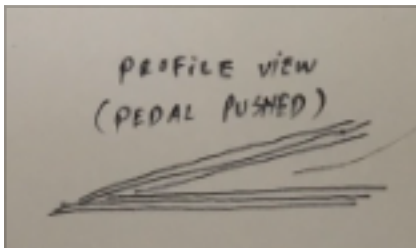
here you hear the "STRINGS" come in as "NO PEDALS PUSHED"



They alternate between major and minor along with the pattern of the section, 5 bar, 6 bar, 7 bar, 8 bar (always looping in 27 bar chunks)



When we alternate between major and minor, we have a filter on the MAJOR sections which mimic this pattern by adding a rising bandpass filter on the strings:

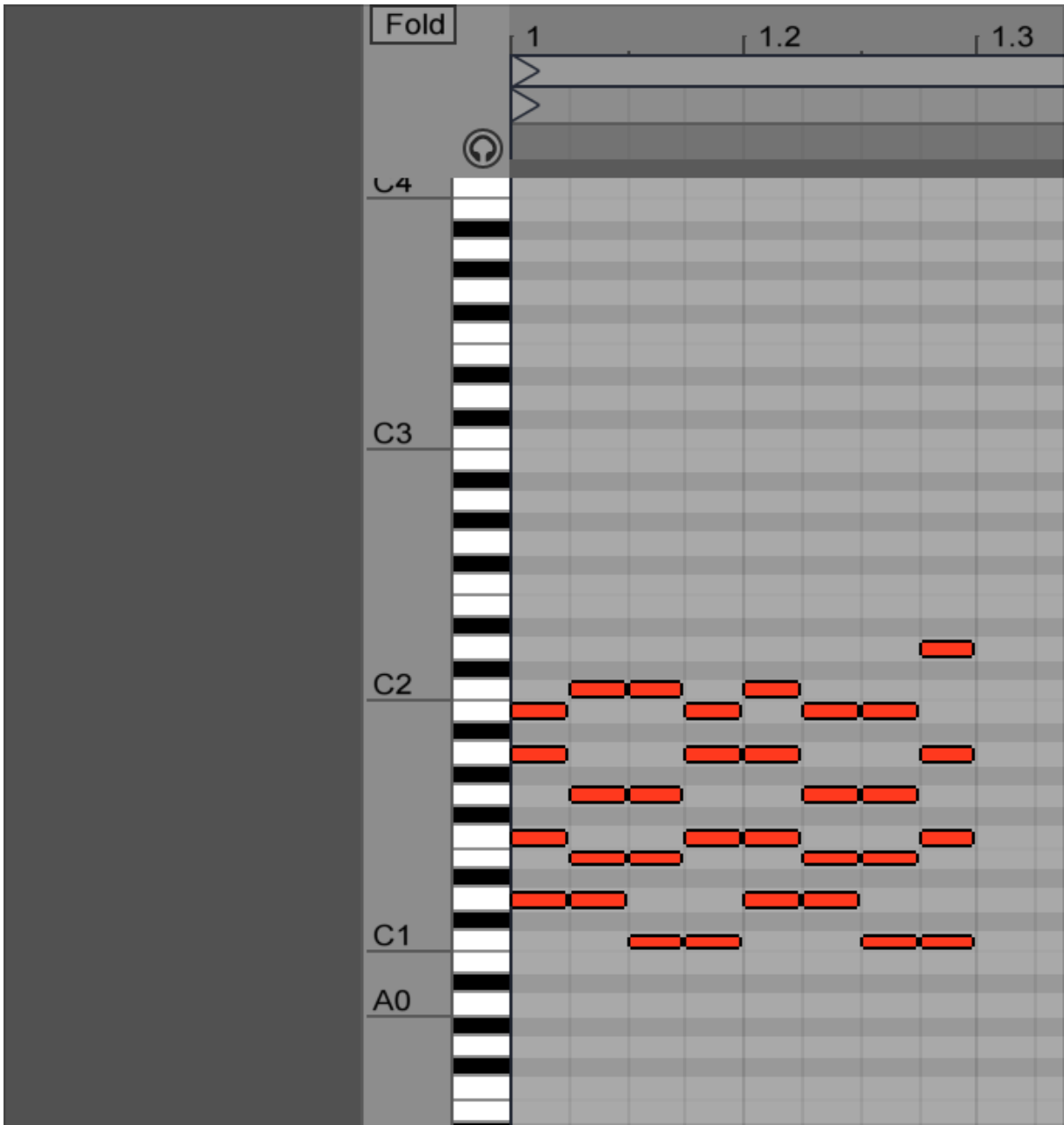
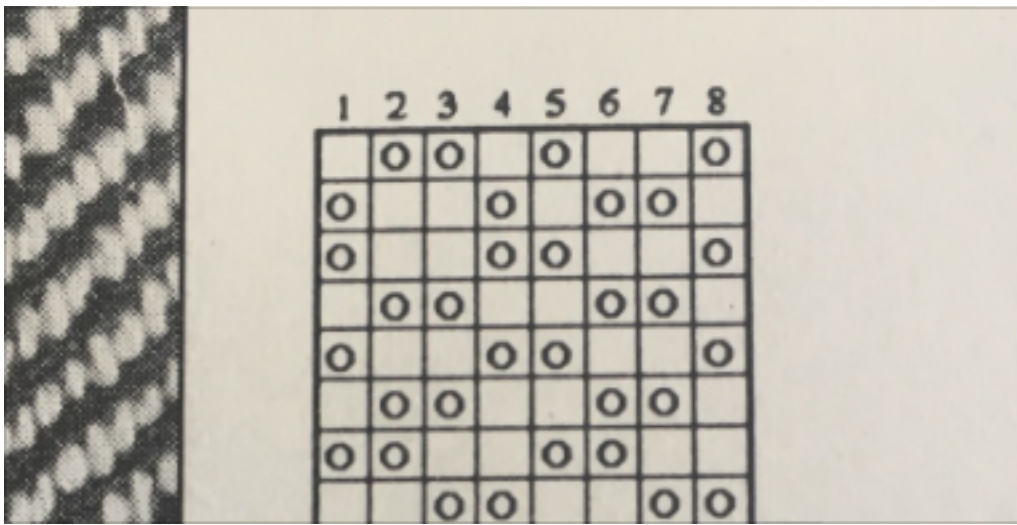


section 4

We kick off section 4 by making the kick drum follow the "section lead pattern" rhythm like so, which cycles through our main pattern rhythms as outlined above (all the rhythms do this in some way, but this is the only section where the kick drum does it, as it's the final section):



simultaneously we introduce the PIANO, simply arpeggiating through this pattern:



In ALL sections, the rhythms follow the “section lead patterns”